

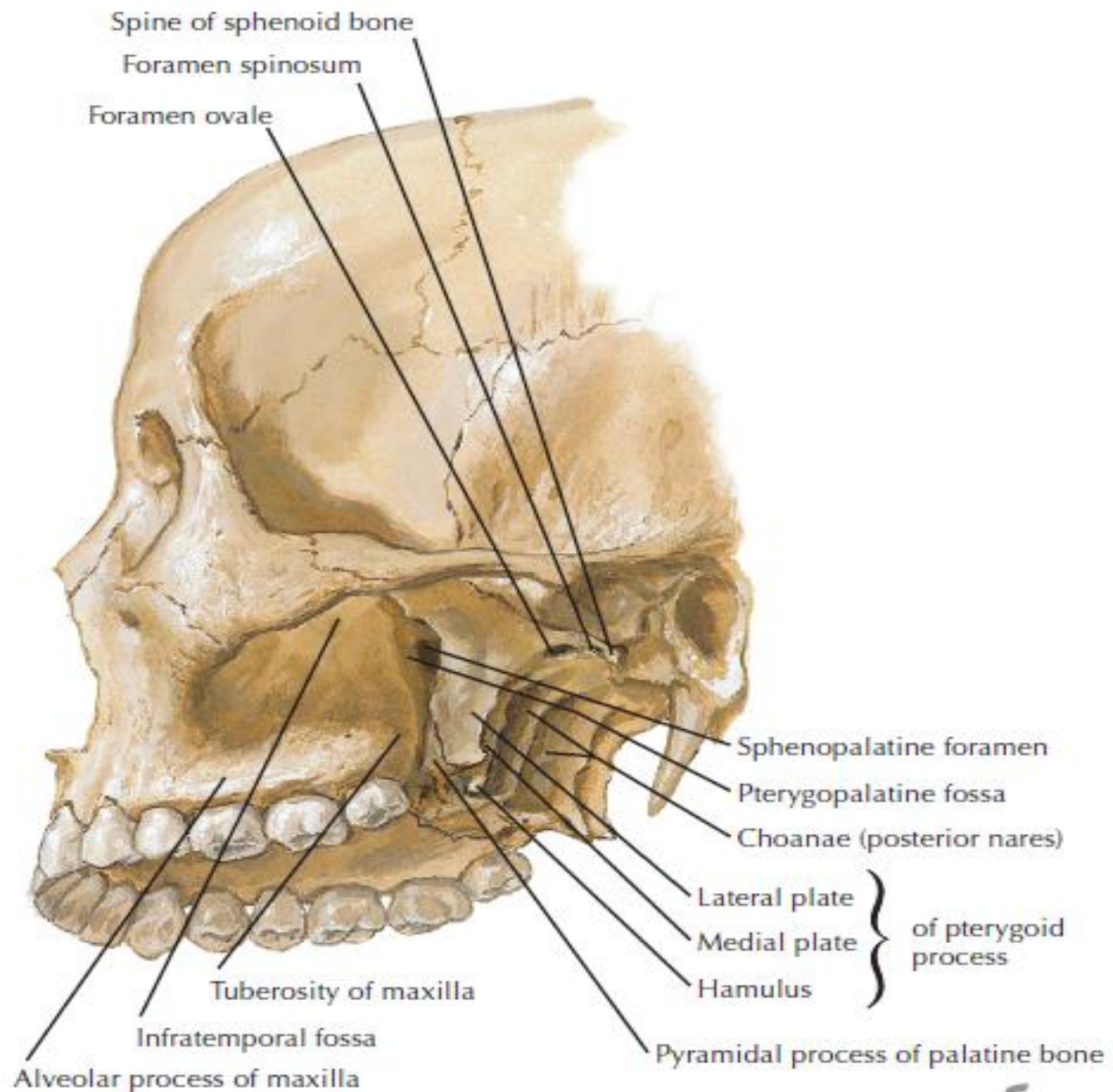
# **Pterygopalatine fossa**

**Raed Ogaili**

**M.Sc. Human Anatomy**

## BORDERS

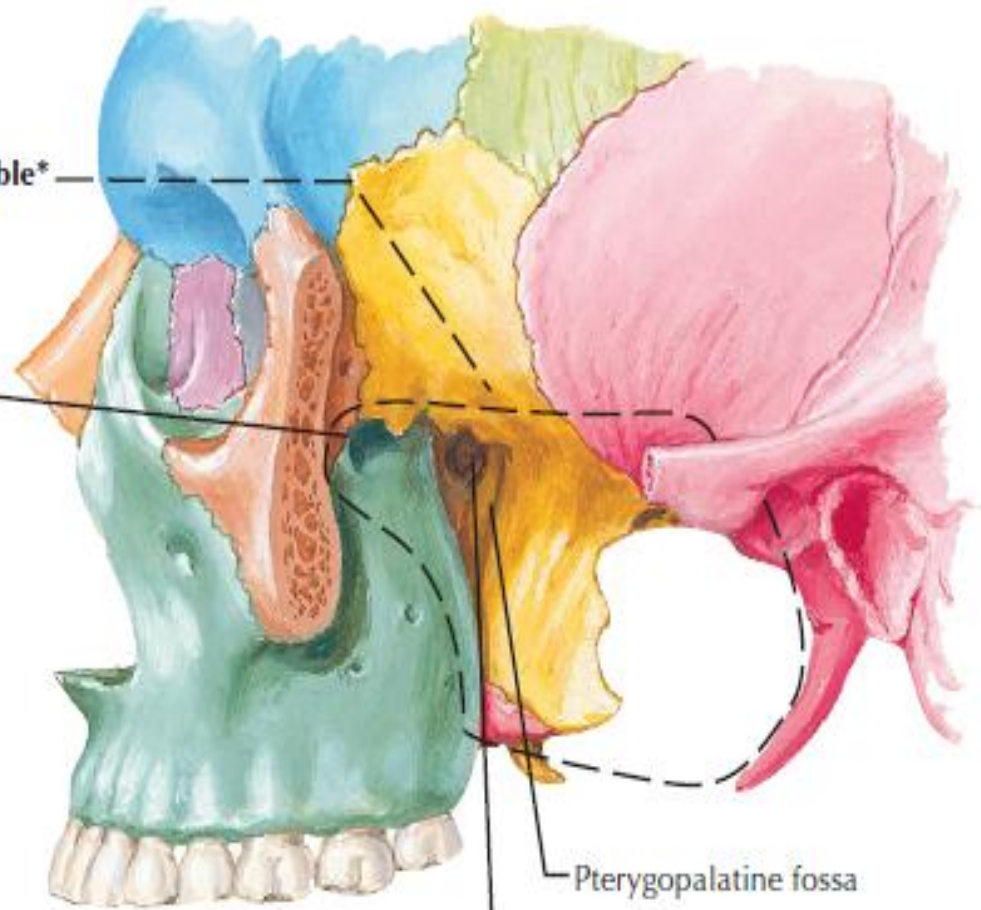
Border	Structures
Anterior wall	Infratemporal surface of the maxilla
Posterior wall	Pterygoid process of the sphenoid
Medial wall	Perpendicular plate of the palatine
Lateral wall	None (open to the pterygomaxillary fissure)
Superior wall	Inferior surface of the sphenoid and the orbital plate of the palatine bone
Inferior wall	Pyramidal process of the palatine



- The pterygopalatine fossa is a small space behind and below the orbital cavity. It communicates
- **laterally**
- with the infratemporal fossa through the pterygomaxillary fissure,
- **medially**
- with the nasal cavity through the sphenopalatine foramen,
- **superiorly**
- with the skull through the foramen rotundum
- **anteriorly** with the orbit through the inferior orbital fissure.

Infratemporal fossa exposed by  
removal of zygomatic arch and mandible\*

Inferior orbital fissure



Pterygopalatine fossa

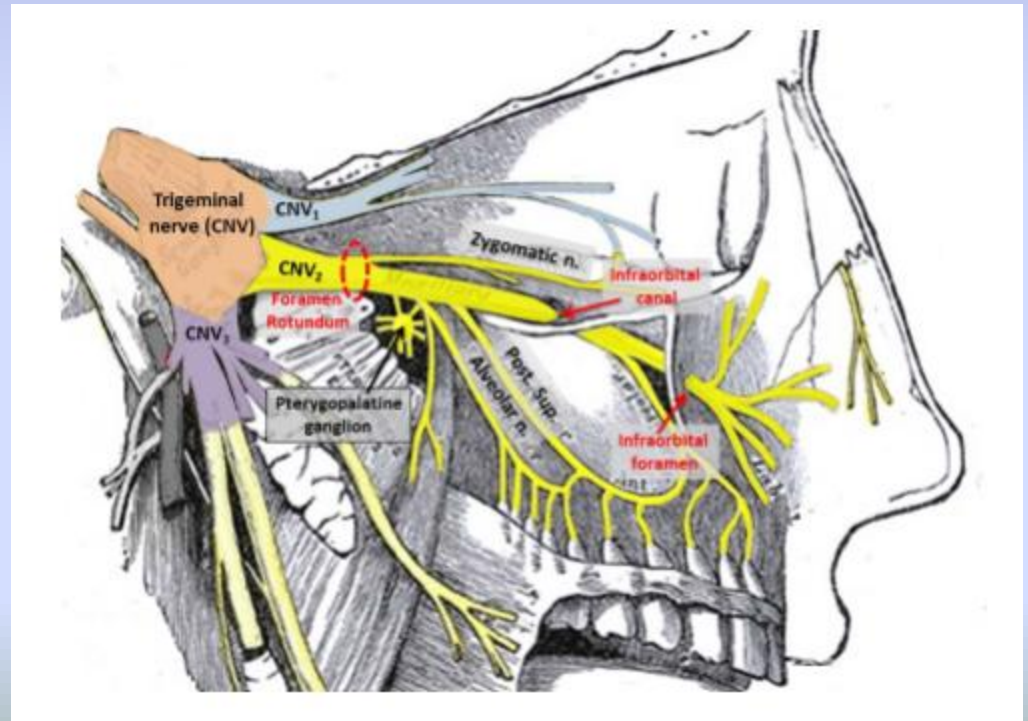
Sphenopalatine foramen

\*Superficially, mastoid process forms posterior boundary

*F. Netter  
M.D.*

# Contents

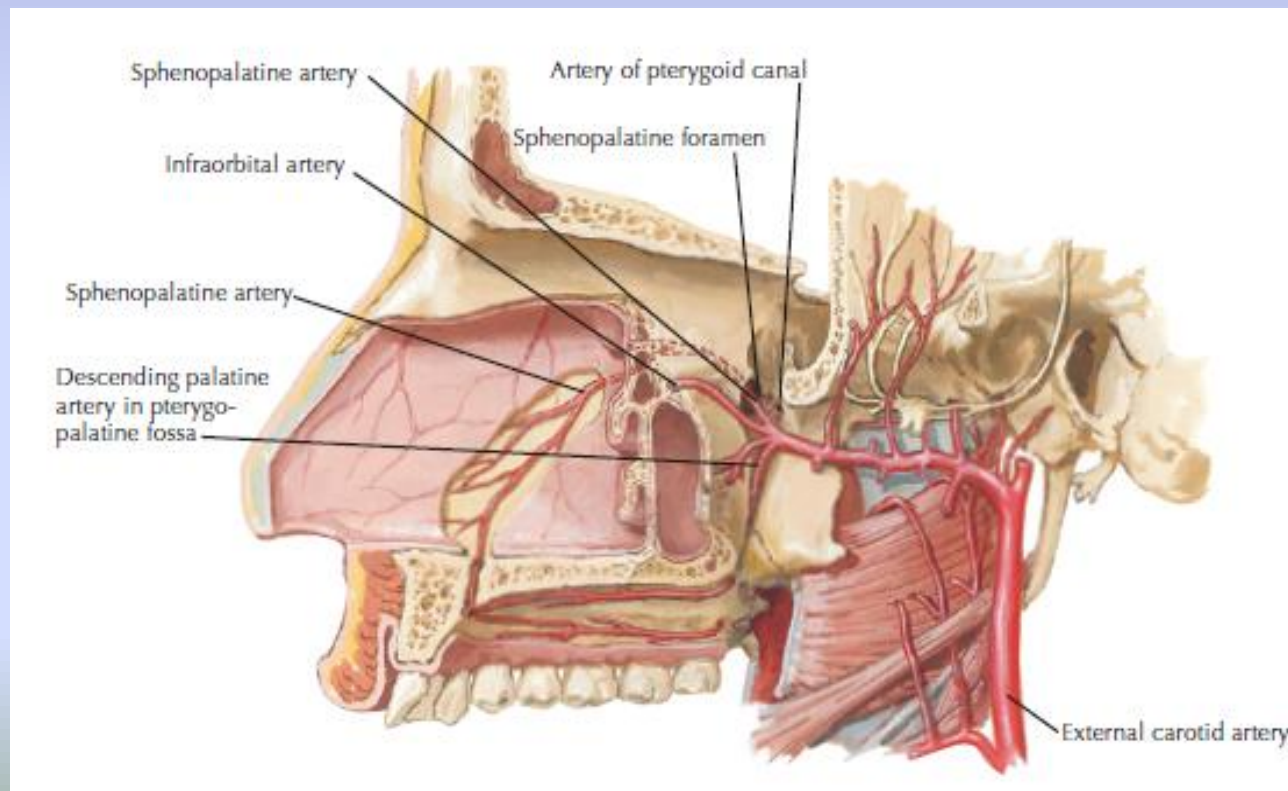
- **Maxillary Nerve**
- The maxillary nerve is the second branch of the trigeminal nerve (CNV<sub>2</sub>). It passes from the middle cranial fossa into the pterygopalatine fossa through the **foramen rotundum**.





# Maxillary (3<sup>rd</sup> part)

- The maxillary artery is a terminal branch of the **external carotid artery**. The 3<sup>rd</sup> part of maxillary artery lies within the pterygopalatine fossa



# Thanks

