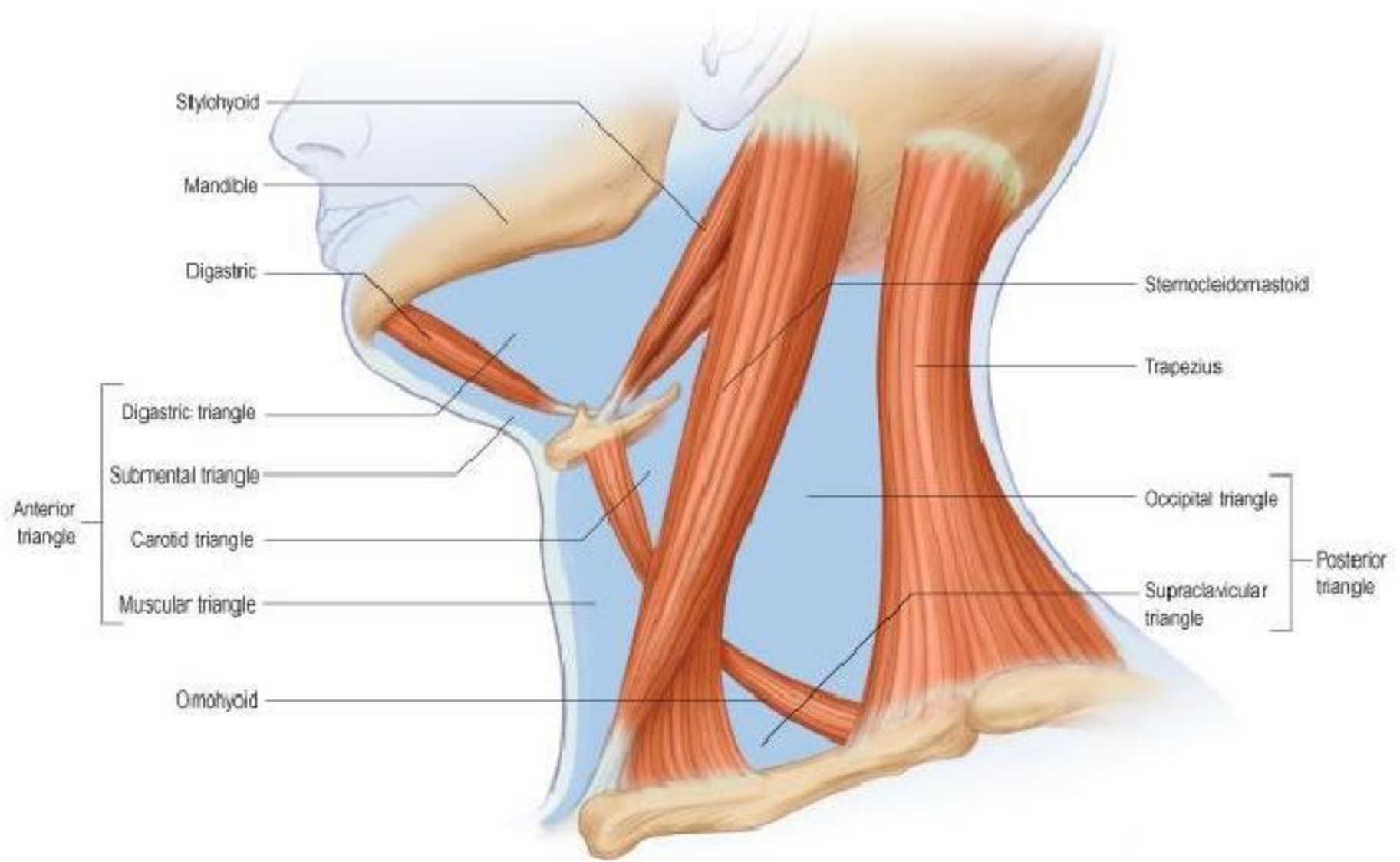


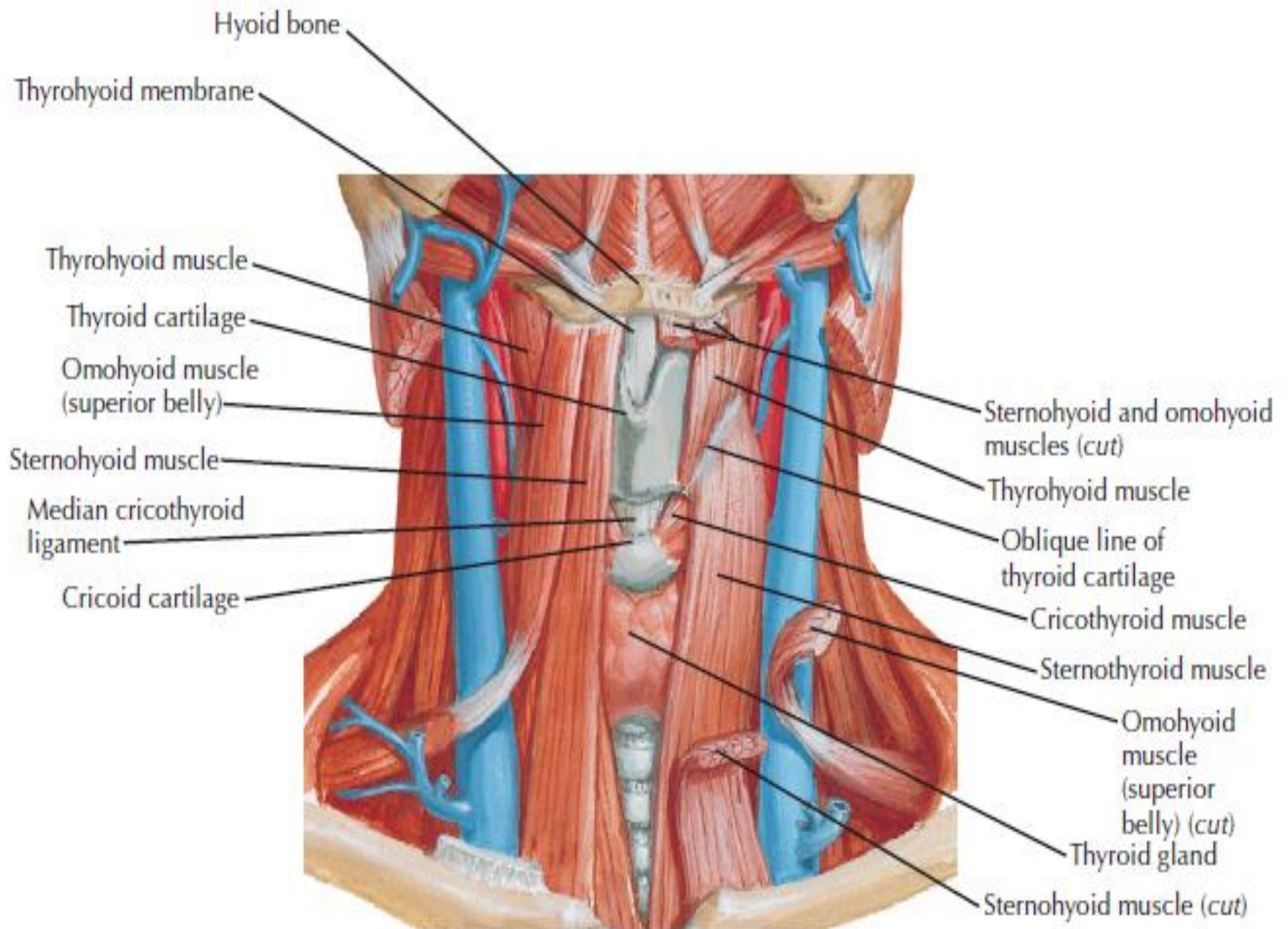
# **Anterior Triangle**

## **Muscular triangle & Submental triangle**

**Raed Ogaili  
M. Sc. Human Anatomy**



**The triangles of the left side of the neck**



## MUSCULAR TRIANGLE

Borders of the muscular triangle:

- Anterior border of the sternocleidomastoid
- Superior omohyoid
- Midline

Floor of the triangle is composed of the:

- Sternohyoid
- Sternothyroid

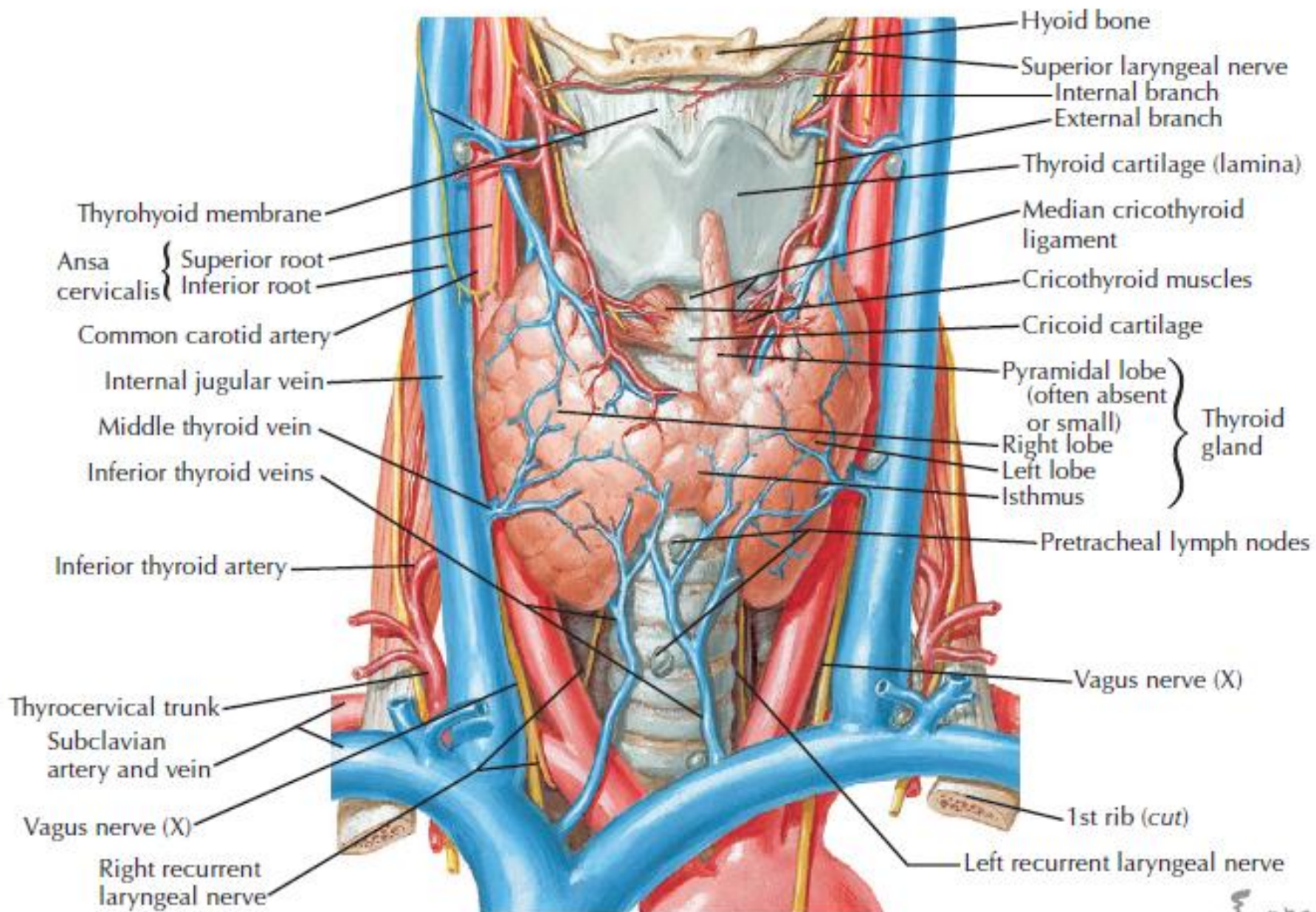
Roof is made of the:

- Skin
- Superficial fascia with platysma
- Deep cervical fascia

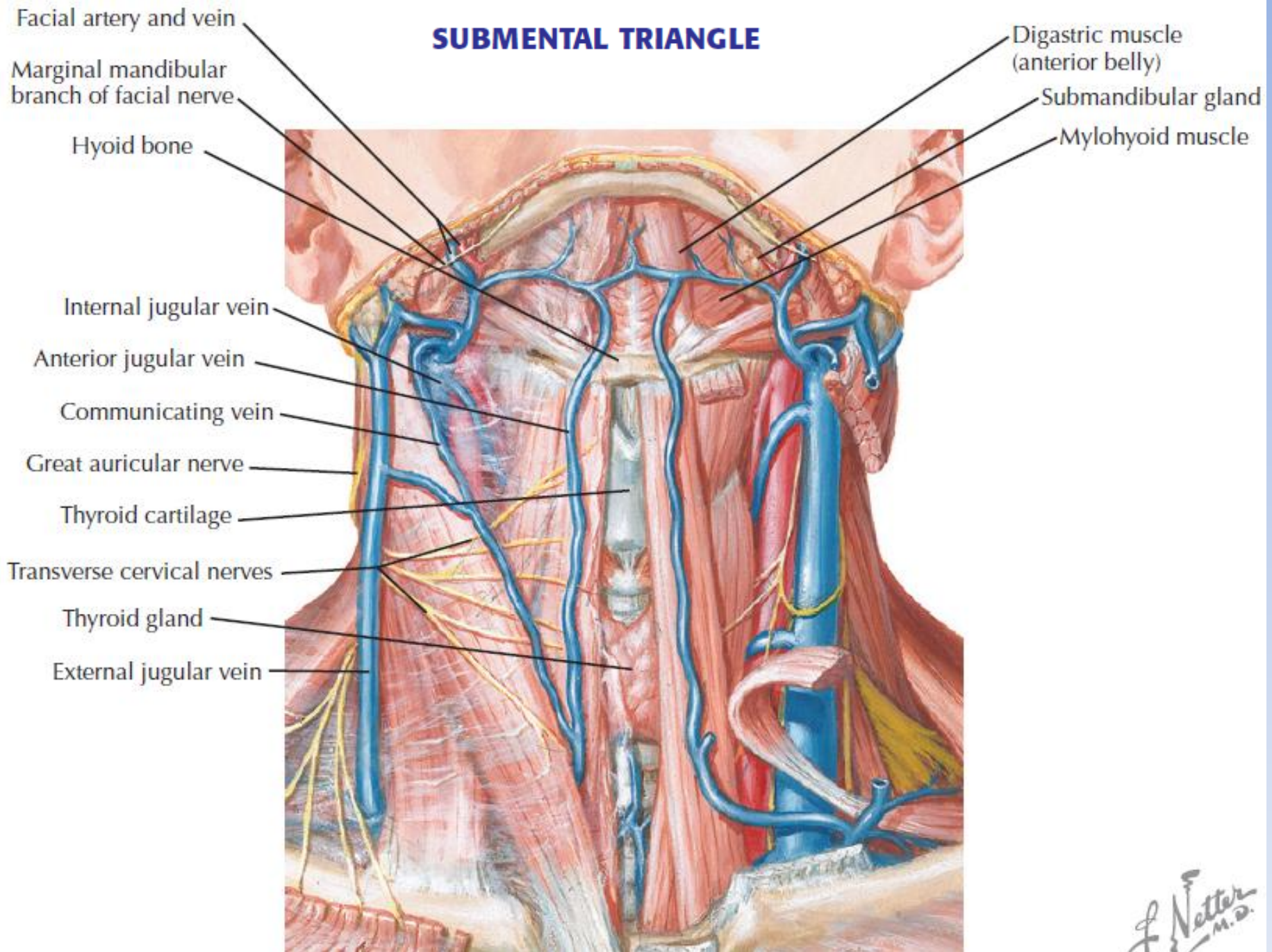
Muscular triangle is paired

CONTENTS OF THE MUSCULAR TRIANGLE			
Artery	Veins	Nerve	Structures
Superior thyroid	Inferior thyroid Anterior jugular	Ansa cervicalis	Strap muscles: <ul style="list-style-type: none"><li>• Sternohyoid</li><li>• Sternothyroid</li><li>• Thyrohyoid</li></ul> Thyroid gland Parathyroid gland Larynx Trachea Esophagus





## SUBMENTAL TRIANGLE





# Anterior Triangle

## SUBMENTAL TRIANGLE

Borders of the submental triangle:

- Body of hyoid
- Anterior digastric on right
- Anterior digastric on left

Floor of the triangle is composed of the:

- Mylohyoid

Roof is made of the:

- Skin
- Superficial fascia with platysma
- Deep cervical fascia

Submental triangle is unpaired

CONTENTS OF THE SUBMENTAL TRIANGLE			
Artery	Vein	Nerve	Structures
	Anterior jugular		Submental lymph nodes

**Thanks for your listening**