

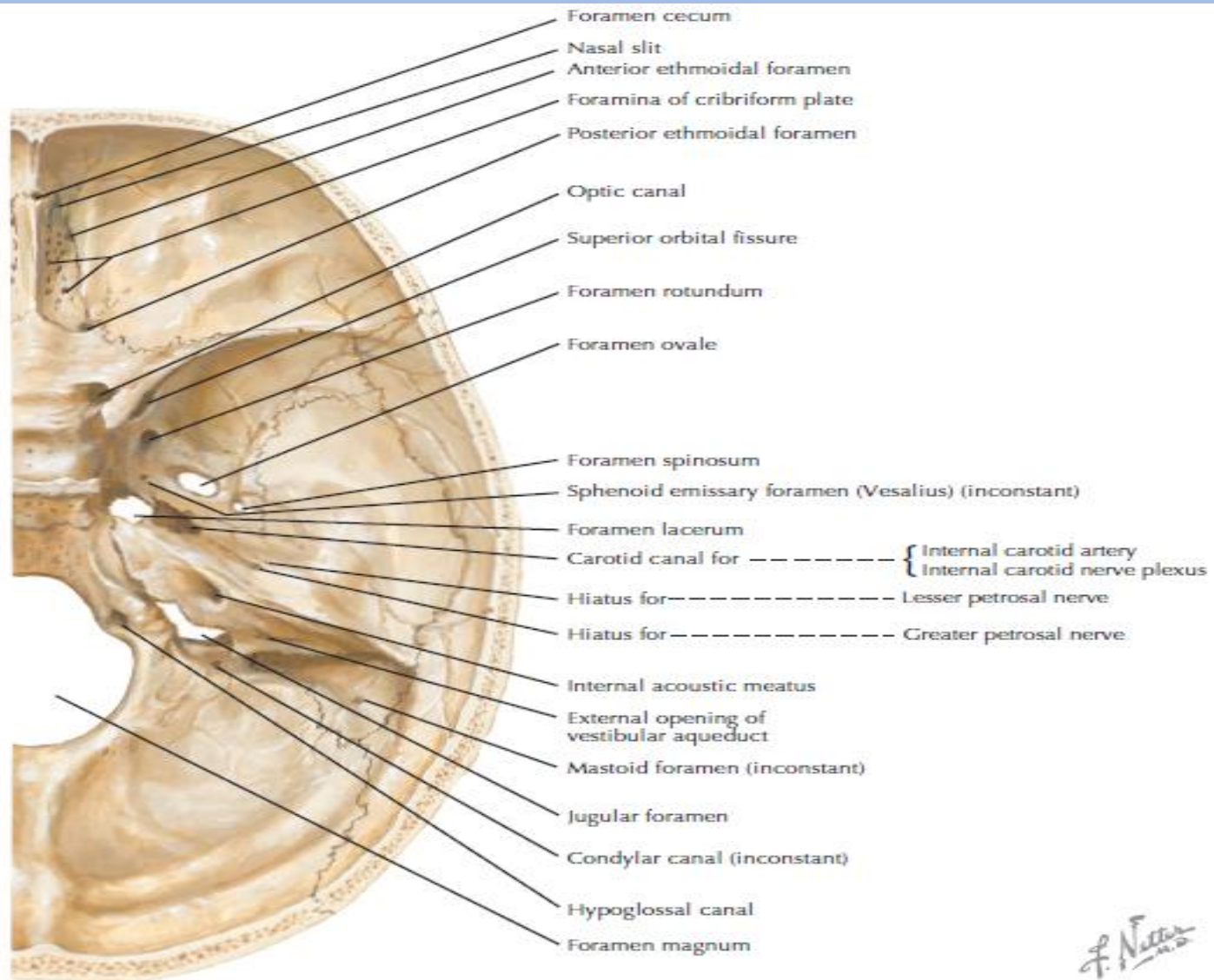
Skull III

Raed Ogaili

MSc. Human Anatomy

Major foramina and fissures

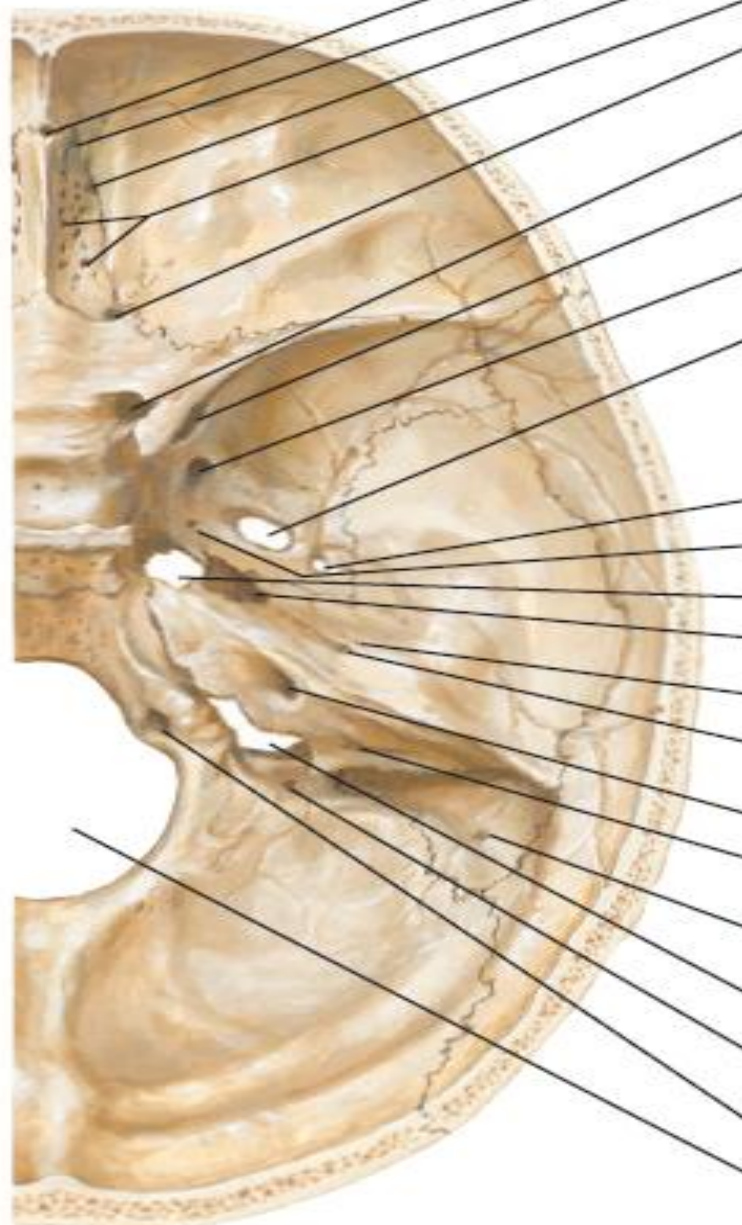
Superior view of the cranial base



Major foramina and fissures

Superior view of the cranial base

Foramen/Fissure	Located in or Formed by	Structures Passing through
Cribriform plate	Ethmoid	Olfactory nn. from the olfactory bulb
Foramen cecum	Between the frontal and the ethmoid bones	Emissary v. from nasal cavity to the superior sagittal sinus
Anterior ethmoid foramen		Anterior ethmoid n. and vessels
Posterior ethmoid foramen		Posterior ethmoid n. and vessels
Optic canal	Sphenoid	Optic n., ophthalmic a.
Superior orbital fissure	Between the greater and the lesser wings of the sphenoid	Nasociliary, frontal, and lacrimal branches of the ophthalmic division of the trigeminal n., oculomotor n., trochlear n., abducens n., superior and inferior ophthalmic vv.
Foramen rotundum	Sphenoid	Maxillary division of the trigeminal n.
Foramen ovale		Mandibular division of the trigeminal n., accessory meningeal a., lesser petrosal n., emissary v.
Foramen spinosum		Middle meningeal vessels and meningeal branch of the mandibular division of the trigeminal n.
Sphenoid foramen		Emissary v.



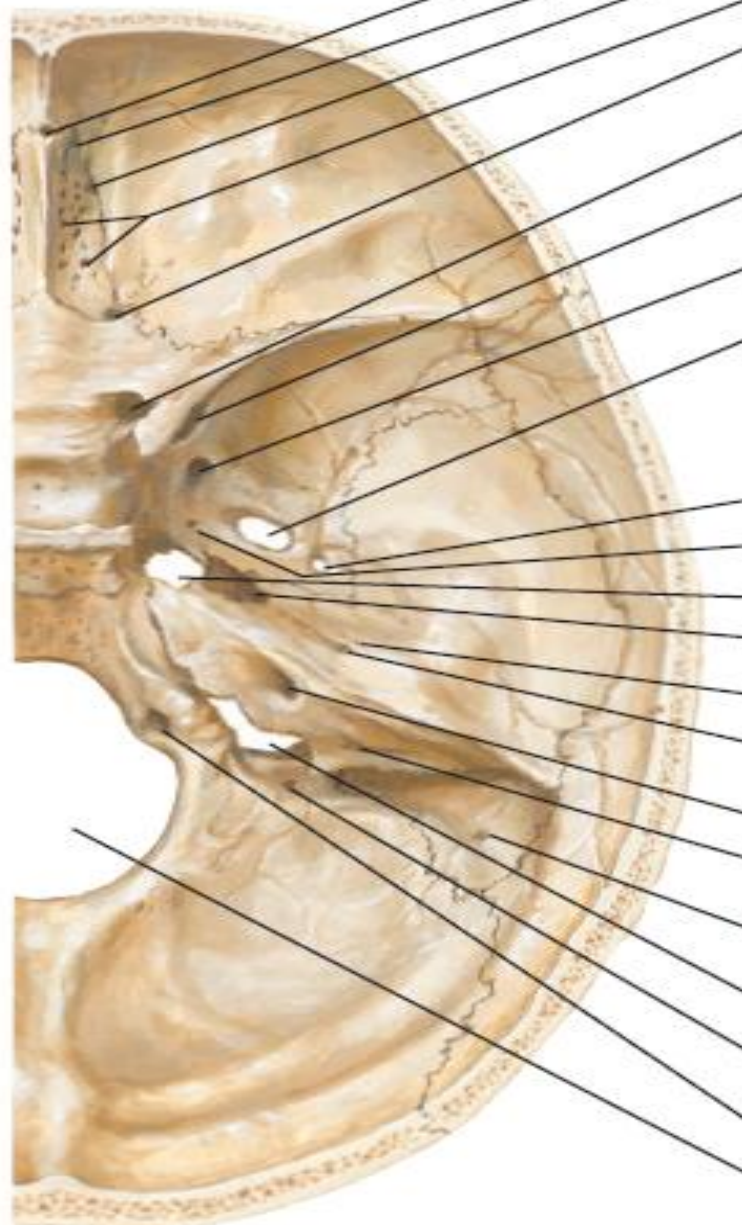
- Foramen cecum
- Nasal slit
- Anterior ethmoidal foramen
- Foramina of cribriform plate
- Posterior ethmoidal foramen
- Optic canal
- Superior orbital fissure
- Foramen rotundum
- Foramen ovale
- Foramen spinosum
- Sphenoid emissary foramen (Vesalius) (inconstant)
- Foramen lacerum
- Carotid canal for ----- { Internal carotid artery
Internal carotid nerve plexus
- Hiatus for ----- Lesser petrosal nerve
- Hiatus for ----- Greater petrosal nerve
- Internal acoustic meatus
- External opening of vestibular aqueduct
- Mastoid foramen (inconstant)
- Jugular foramen
- Condylar canal (inconstant)
- Hypoglossal canal
- Foramen magnum

F. Netter M.D.

Major foramina and fissures

Superior view of the cranial base

Foramen lacerum	Articulation of the sphenoid (greater wing and body), temporal (petrous portion), and occipital (basilar portion) bones	Nothing passes through it Filled with fibrocartilage during life (although the anterior wall of the foramen has an opening for the pterygoid canal and the posterior wall has an opening for the carotid canal)
Carotid canal	Temporal (petrous portion)	Internal carotid a., internal carotid n. plexus (sympathetics)
Hiatus for the lesser petrosal n.		Lesser petrosal n.
Hiatus for the greater petrosal n.		Greater petrosal n.
Internal acoustic meatus		Facial n., vestibulocochlear n., labyrinthine a.
Opening of the vestibular aqueduct		Endolymphatic duct
Mastoid foramen	Temporal (mastoid portion)	Emissary v. (sometimes branches of the occipital a.)
Jugular foramen	Temporal (petrous portion) and occipital	Glossopharyngeal n., vagus n., spinal accessory n., inferior petrosal sinus, sigmoid sinus, posterior meningeal a.
Condylar canal	Occipital	Emissary v., meningeal branches of ascending pharyngeal a.
Hypoglossal canal		Hypoglossal n.
Foramen magnum		Medulla oblongata, vertebral arteries, spinal roots of the spinal accessory n.



- Foramen cecum
- Nasal slit
- Anterior ethmoidal foramen
- Foramina of cribriform plate
- Posterior ethmoidal foramen
- Optic canal
- Superior orbital fissure
- Foramen rotundum
- Foramen ovale
- Foramen spinosum
- Sphenoid emissary foramen (Vesalius) (inconstant)
- Foramen lacerum
- Carotid canal for ----- { Internal carotid artery
Internal carotid nerve plexus
- Hiatus for ----- Lesser petrosal nerve
- Hiatus for ----- Greater petrosal nerve
- Internal acoustic meatus
- External opening of vestibular aqueduct
- Mastoid foramen (inconstant)
- Jugular foramen
- Condylar canal (inconstant)
- Hypoglossal canal
- Foramen magnum

F. Netter M.D.