

## Anterior Triangle

### submandibular triangle

Often called the digastric triangle

#### Borders of the submandibular triangle:

- Inferior border of the mandible
- Posterior digastric
- Anterior digastric

#### Floor of the triangle is composed of the:

- Hyoglossus
- Mylohyoid
- Middle constrictor

#### Roof is made of the:

- Skin
- Superficial fascia with platysma
- Deep cervical fascia

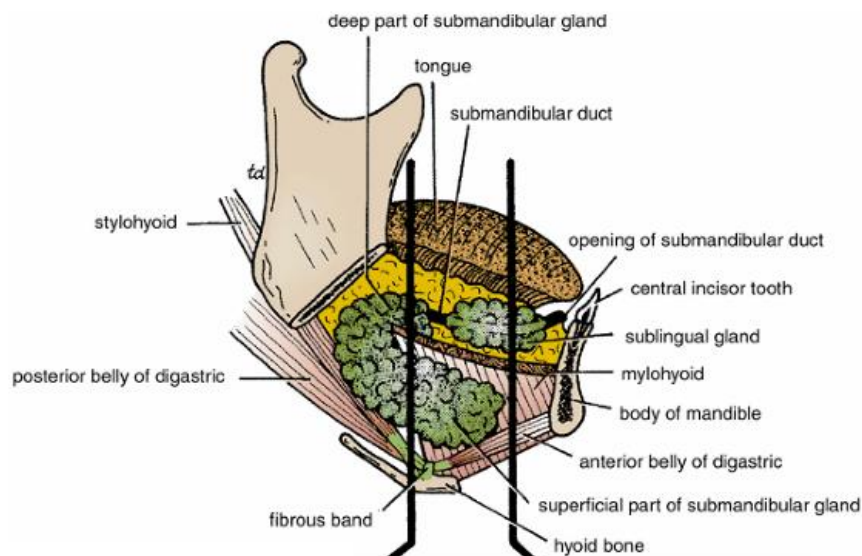
Submandibular triangle is paired

### Contents

CONTENTS OF THE SUBMANDIBULAR TRIANGLE			
Arteries	Veins	Nerves	Structures
Facial Submental Lingual (small portion)	Facial Submental Lingual (small portion)	Mylohyoid Hypoglossal	Submandibular gland Submandibular lymph nodes Inferior portion of the parotid gland

## Submandibular Gland

It lies beneath the lower border of the body of the mandible and is divided into superficial and deep parts by the mylohyoid muscle.



## Superficial part:

It presents three surfaces— inferior(anterio-lateral), lateral and medial.

### The lateral surface is related with the following:

Submandibular fossa of the mandible

Medial pterygoid muscle close to its insertion;

Facial artery loops downward and forward between the bone and the gland.

### The inferior surface (anterio-lateral) presents the following relations:

Covered by the skin, superficial fascia, platysma and deep cervical fascia;

Crossed by the common facial vein and cervical branch of facial nerve, under cover of platysma, Submandibular lymph nodes, beneath the deep fascia.

### The medial surface

Mylohyoid muscle.

The hyoglossus muscle.

Lingual nerve

Hypoglossal nerve

Submandibular ganglion.

**The deep part** lies beneath the mucous membrane of the mouth on the side of the tongue. The deep part of the gland extends forward in the interval between the mylohyoid and hyoglossus upto the posterior end of sublingual salivary gland.

**The submandibular duct** emerges from the anterior end of the deep part of the gland and runs forward beneath the mucous membrane of the mouth. It opens into the mouth on a small papilla, which is situated at the side of the frenulum of the tongue.

