



Figure 8.14a. High-grade parotid malignancy with skin fixation and N0 neck. Incision modified to include skin excision (arrow), and cervical incision extended to allow supra-omohyoid neck dissection.



Figure 8.14d. The surgical site following parotidectomy and selective neck dissection.



Figure 8.14b. The skin flaps developed with the skin overlying the tumor left on the parotid gland.



Figure 8.14c. The selective neck dissection is complete with the specimen in continuity with the parotid gland. The facial nerve trunk has been exposed and the superficial parotidectomy is being performed.

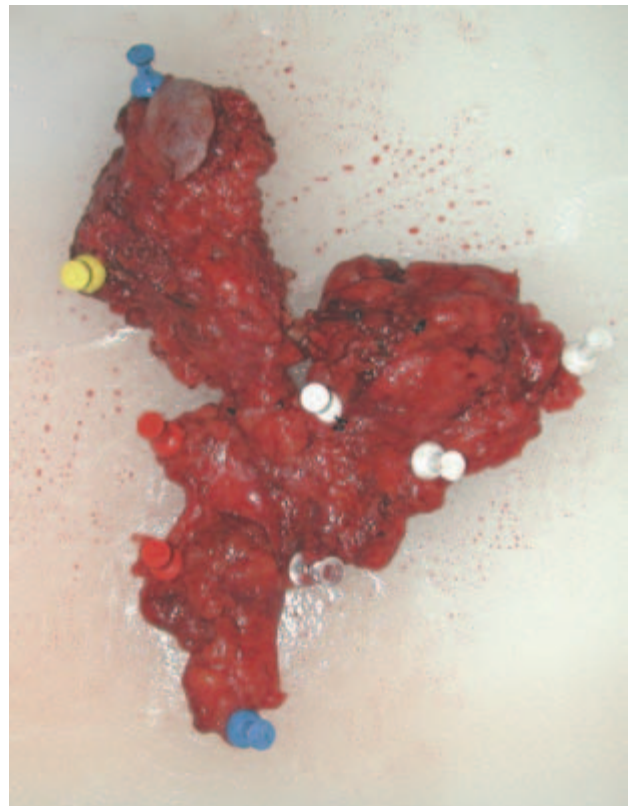


Figure 8.14e. The surgical specimen with the parotid superiorly and level I nodes pinned out with white pins.