

Figure 9.6c. Surgical specimen with arrow indicating PA.

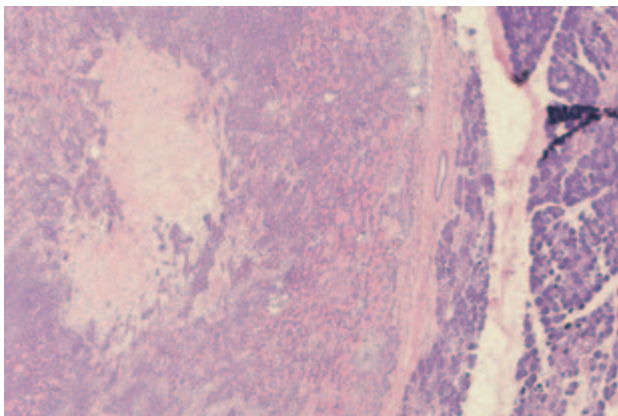


Figure 9.6d. Histopathology shows pleomorphic adenoma of submandibular gland.

(Laskawi et al. 1995) (Figure 9.9). The marginal mandibular branch of the facial nerve lies between the platysma superficially and the capsule of the submandibular gland (superficial layer of the deep cervical fascia) deeply and can be preserved either by dissecting it along its course and retracting it superiorly or by ligating and cutting the anterior

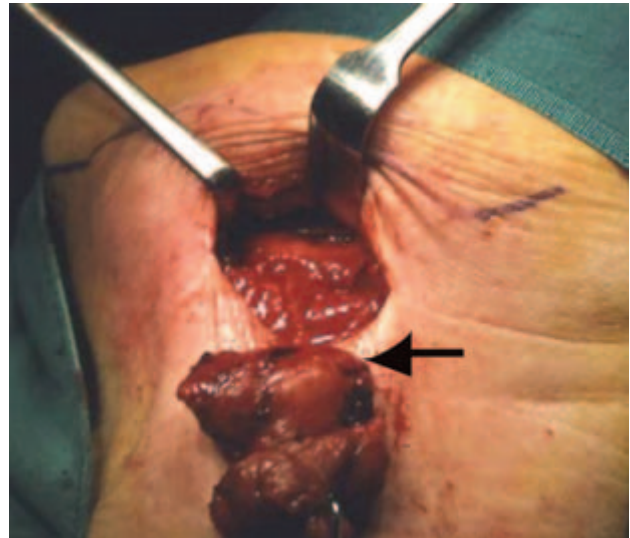


Figure 9.7. Another case of submandibular pleomorphic adenoma dissected to the duct. The larger tumor at the hilum is indicated by the arrow.

facial vein inferior to the nerve and using traction on the tied distal end of the vessel to retract the nerve out of the field (the Hayes Martin maneuver). The incidence of transient palsy of the marginal mandibular branch of the facial nerve is 7% in excising benign tumors and 21% in excising malignant tumors, with only 1 case (<1%) of permanent palsy in this series (Preuss, Klusmann, and Wittekindt et al. 2007). The facial artery is sacrificed if it passes through the gland itself, but if not its numerous small branches including the submental branch can be clipped and the main vessel preserved.

In recurrent PA the disease will frequently be multinodular as in the parotid, and as 45% of these cases involve the subcutaneous tissue under the previous operative scar, excision of the scar with a margin of the surrounding skin is recommended as part of the en bloc excision (Laskawi et al. 1995).

Where a definite diagnosis of a benign tumor is not established preoperatively or when a low-grade malignant tumor is diagnosed, an en bloc resection of level I is safest. If the final histologic diagnosis is benign no important structures have been sacrificed, only the gland and tumor plus fat with lymph nodes. If the tumor is a low-grade malignancy, then no further surgery is indicated. In the case of a high-grade tumor a selective or radical neck dissection can be completed at the same time (Figure 9.10).