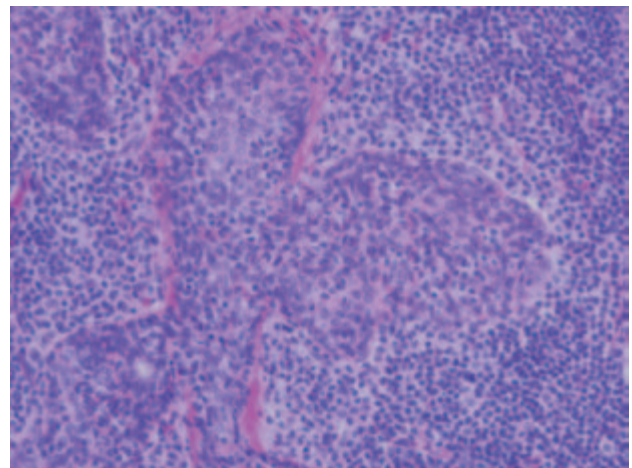




**Figures 6.5d and 6.5e.** An incision in the buccal mucosa (d) was also utilized, which permitted effective dissection of the tissue bed (e).



**Figures 6.5f and 6.5g.** The specimen was able to be removed without difficulty (f) and was diagnosed as a lymphoepithelial lesion.

### DIAGNOSIS OF SJOGREN'S SYNDROME WITH SALIVARY GLAND BIOPSY

Incisional biopsy of minor salivary glands was introduced as a clinical diagnostic procedure for Sjogren's syndrome in 1966. Many studies since

that time have examined the value of this biopsy procedure (Marx, Hartman, and Rethman 1988). One study graded inflammation in labial salivary gland biopsy specimens from patients with various rheumatologic diseases and in postmortem specimens (Chisolm and Mason 1968). A grading