

Figure 5.15a. Management of an extraglandular parotid duct sialolith. The panoramic radiograph demonstrates a small sialolith in the right Stenson's duct.

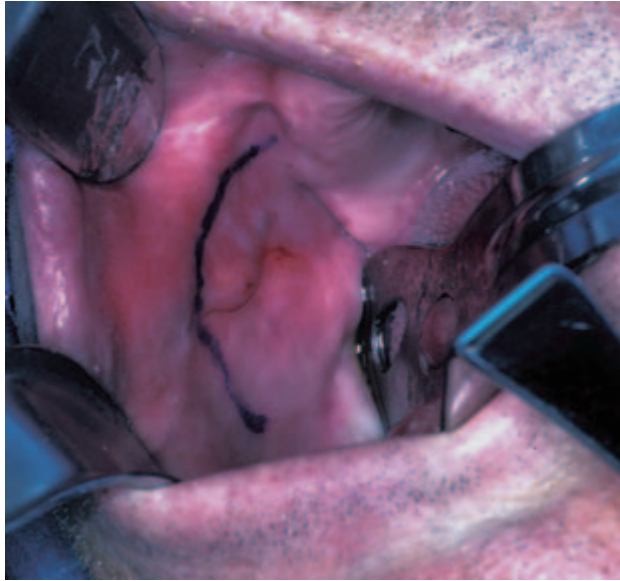


Figure 5.15b. The approach for this transoral sialolithotomy involved a mucosal incision anterior to Stenson's papilla.

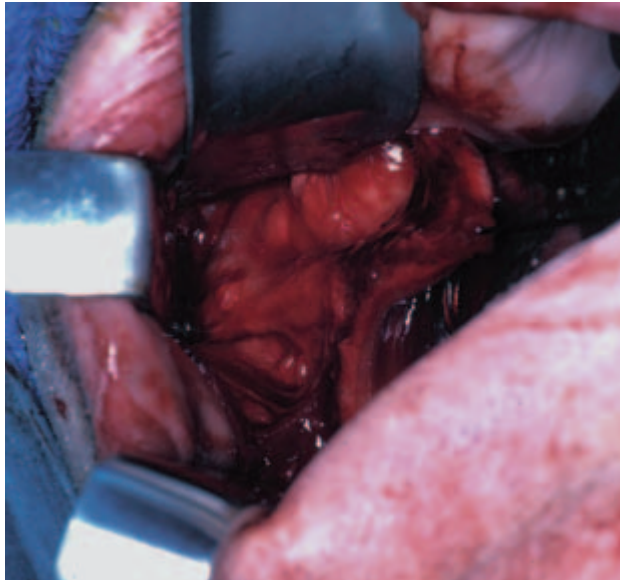
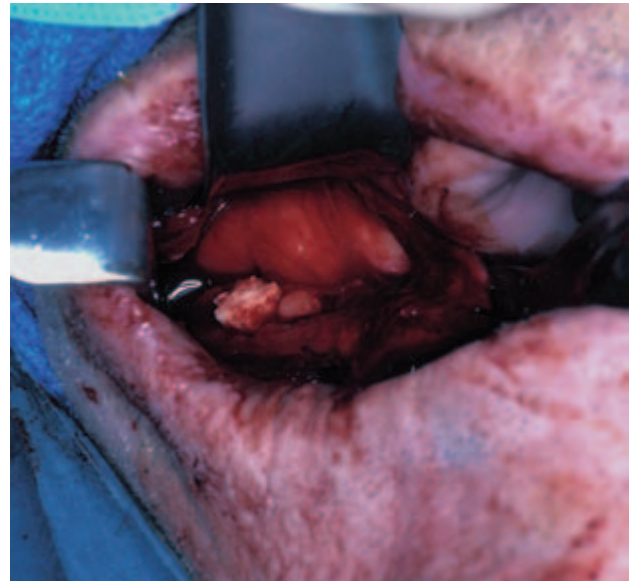
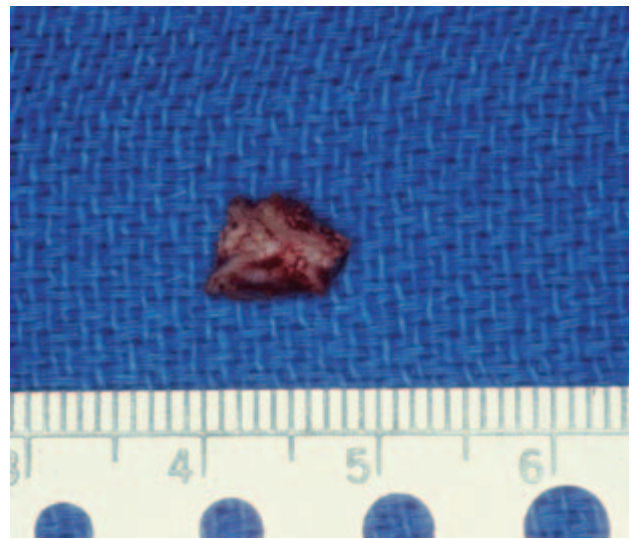


Figure 5.15c. A mucosal flap was developed that included Stenson's duct such that the dissection occurred lateral to the duct.



d



e

Figures 5.15d and 5.15e. Continued dissection allowed for palpation of the sialolith within the duct. The duct was longitudinally incised over the sialolith (d), such that the stone was able to be removed (e).