

# **Skin**

## **Components**

**A- Epidermis. Stratified squamous keratinized epithelium**

**B- Dermis. Composed of two layers of connective tissue containing blood vessels, nerves, sensory receptors, and sweat and sebaceous glands. Beneath the dermis is a layer of loose connective and adipose tissues that forms the superficial fascia of gross anatomy termed the hypodermis.**

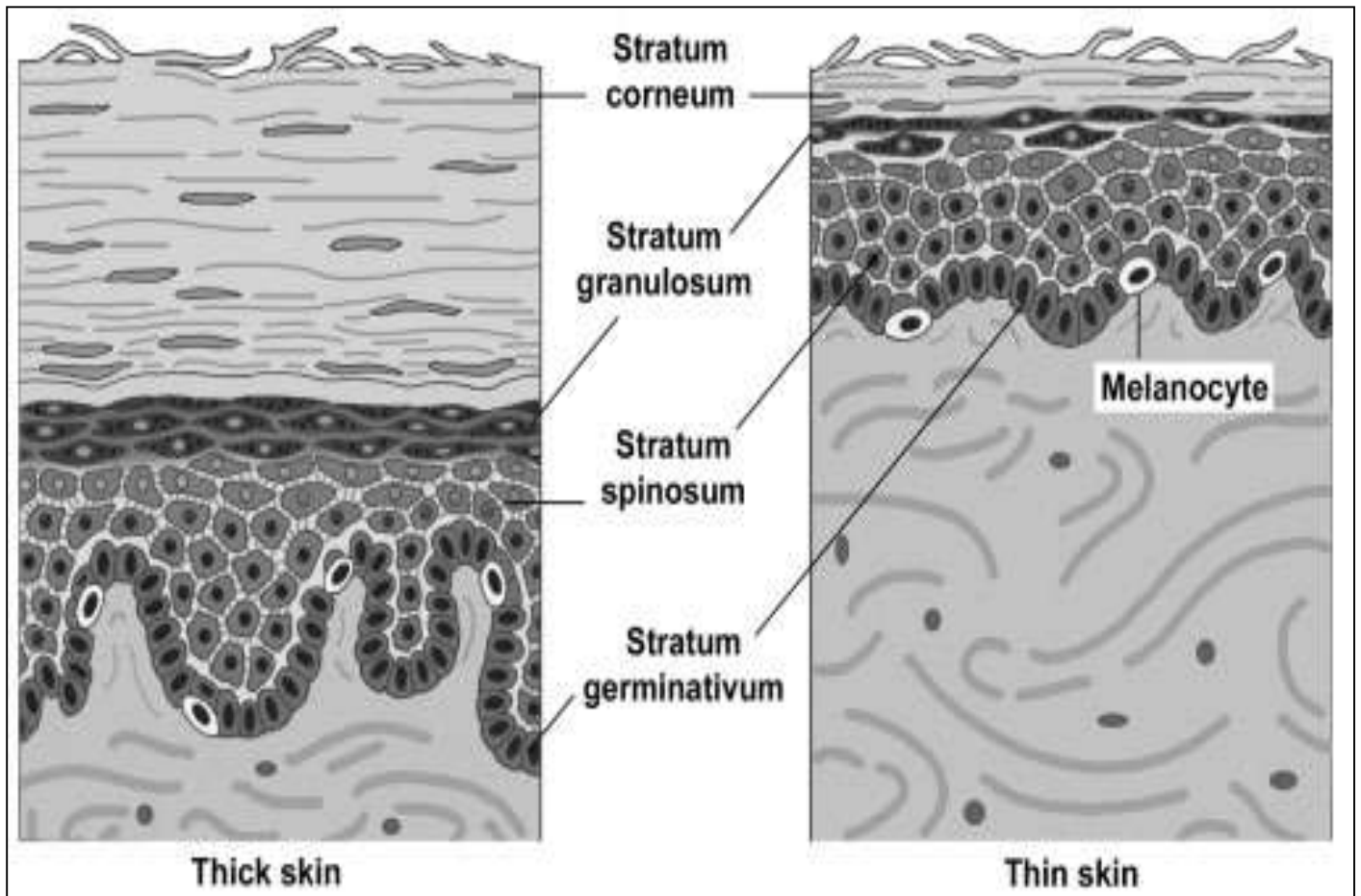
**C- Hypodermis**

## **Layers of the epidermis**

- 1- Stratum germinativum—(basale). A single layer of cuboidal to columnar shaped cells that rest on the basement membrane and undergo rapid cell proliferation**
- 2-Stratum spinosum. “Prickle-cell” or spiny cell layer; 3–10 cells thick. This layer is so-called because the cells are attached to one another by desmosomes,**
- 3-Stratum granulosum: two to four cells thick;**
- 5- Stratum lucidum. A clear layer of non-nucleated, flattened cells that is only visible as a distinct layer in thick skin**
- 5- Stratum corneum. Variably thick layer of extremely flattened,**

**B-Dermis:- Composed of :-**

- 1- Papillary layer Located immediately beneath the basement membrane of the epidermis, forming the dermal papillae**
- 2- Thin layer composed of loose connective tissue Contains small blood vessels, nerves, lymphatics, and the sensory receptors, Meissner’s corpuscles**
- 3-Reticular layer. Located between the papillary layer and the hypodermis Thick layer composed of dense, irregular connective tissue Contains larger nerves and blood vessels, glands, hair follicles,**



and the sensory receptors, Pacinian corpuscles and Ruffini end organs

.

**C-Hypodermis :-** Not technically part of the integument . Composed of loose connective tissue and adipose tissue, which can accumulate in large fatty deposits. May contain the bases of sweat glands and hair follicles

Many sensory receptors, especially Pacinian corpuscles, are present.

**Structures Associated with the Skin**